



Protection des vergers par lutte biologique: une sélection adaptée
des auxiliaires

Bescherming van boomgaarden via biologische bestrijding: een
aangepaste selectie

Ammar Alhmedi

11/02/2022



1

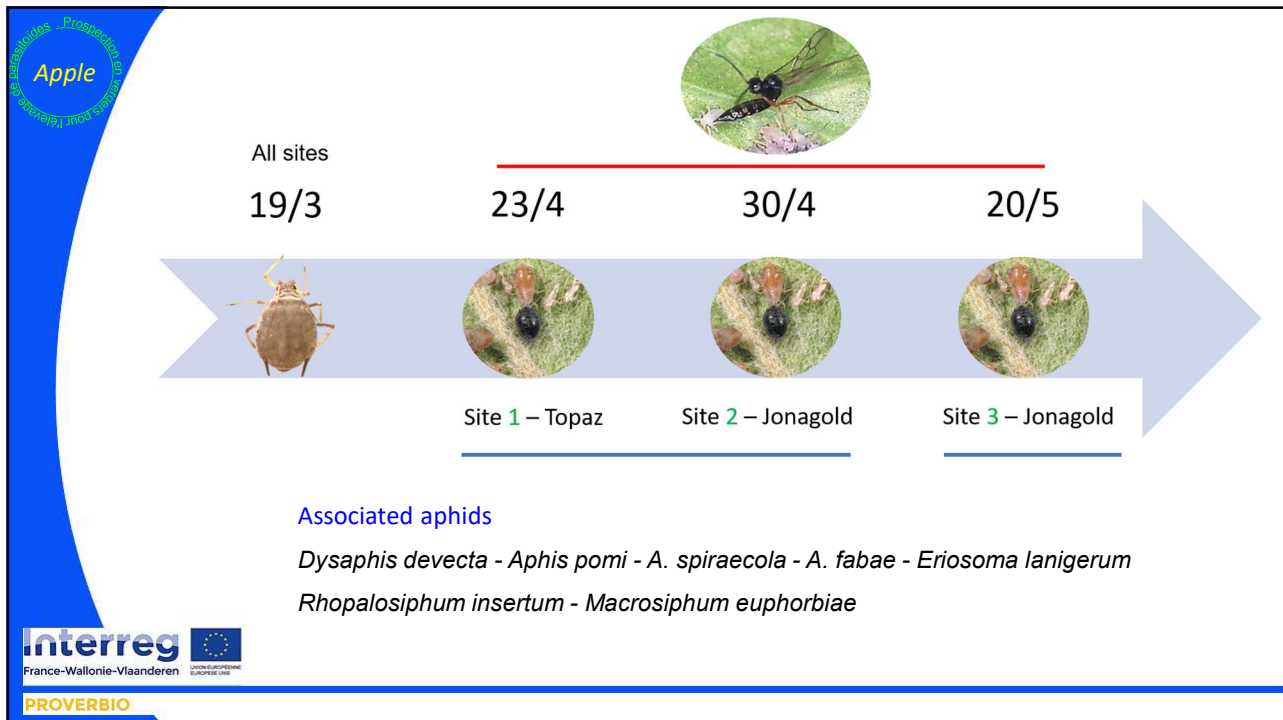


Prospection des espèces de parasitoïdes

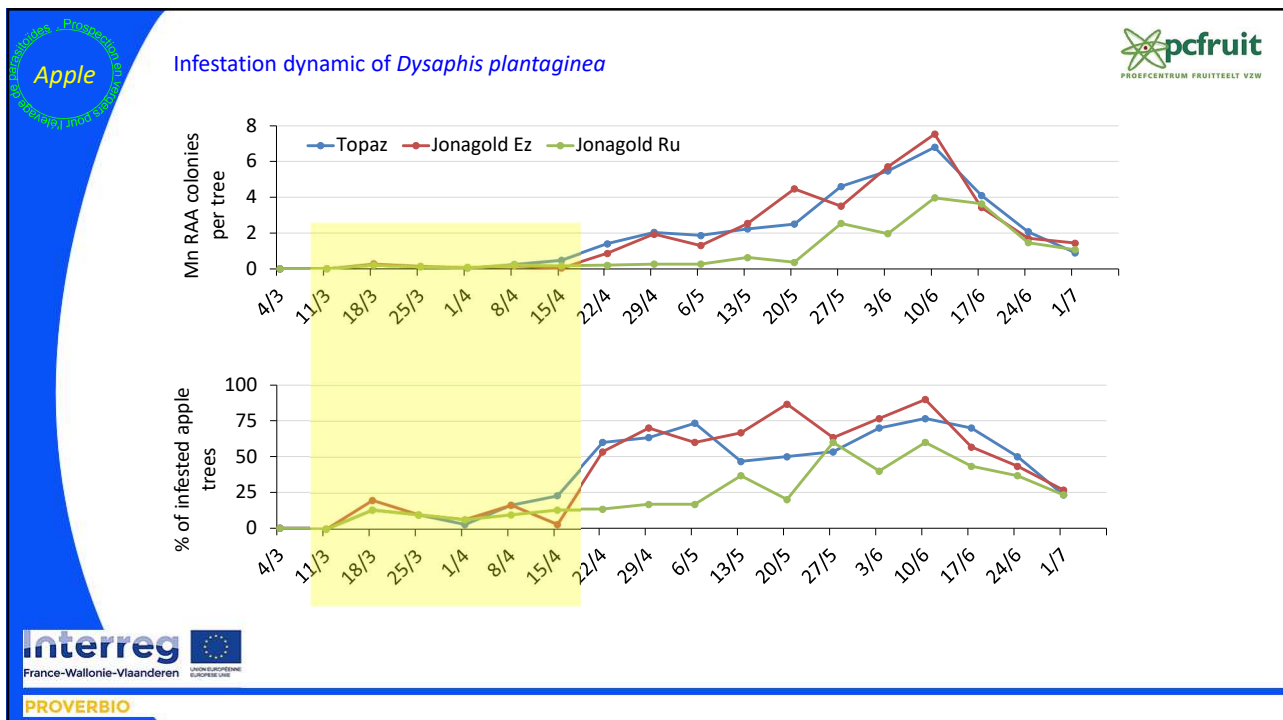
Apple orchards



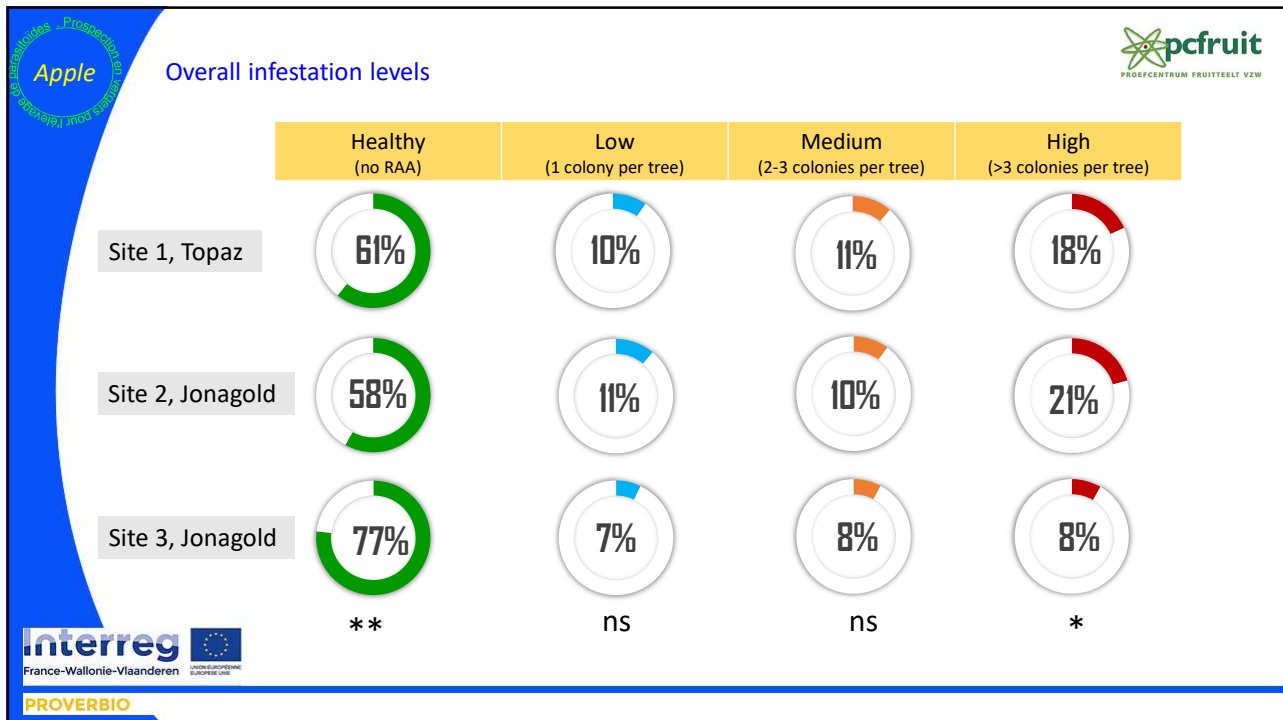
2



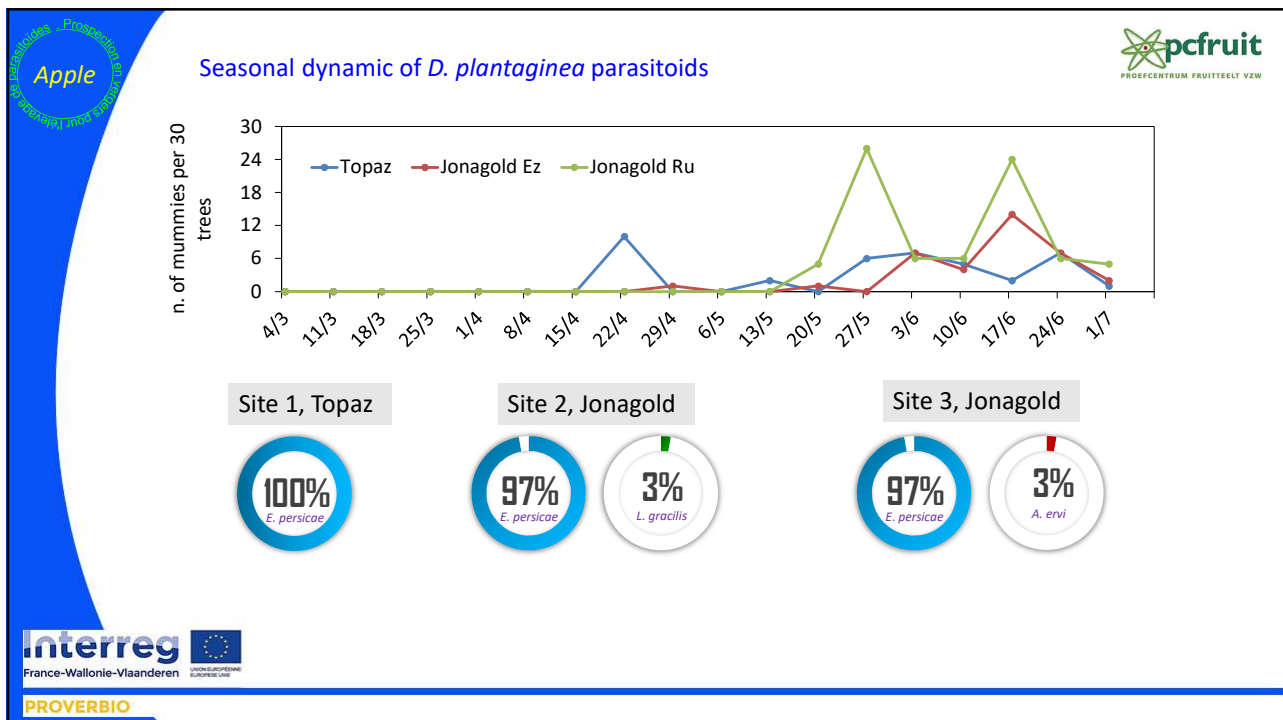
3



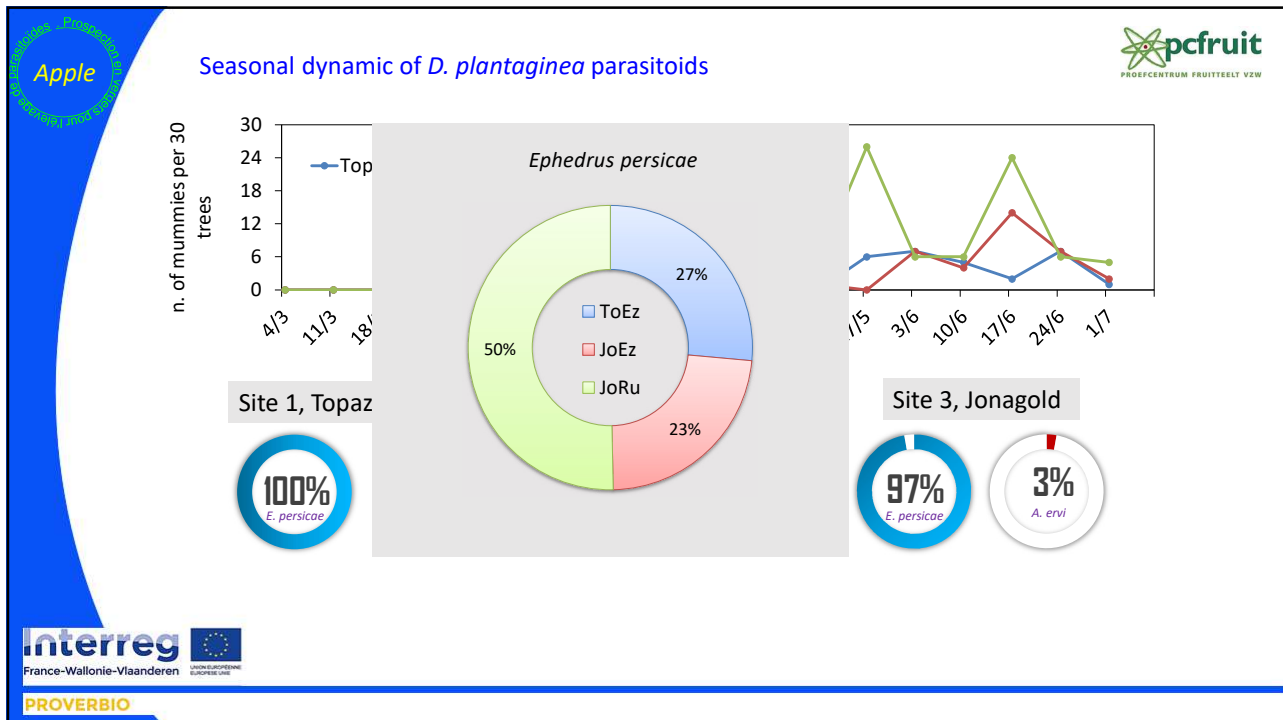
4



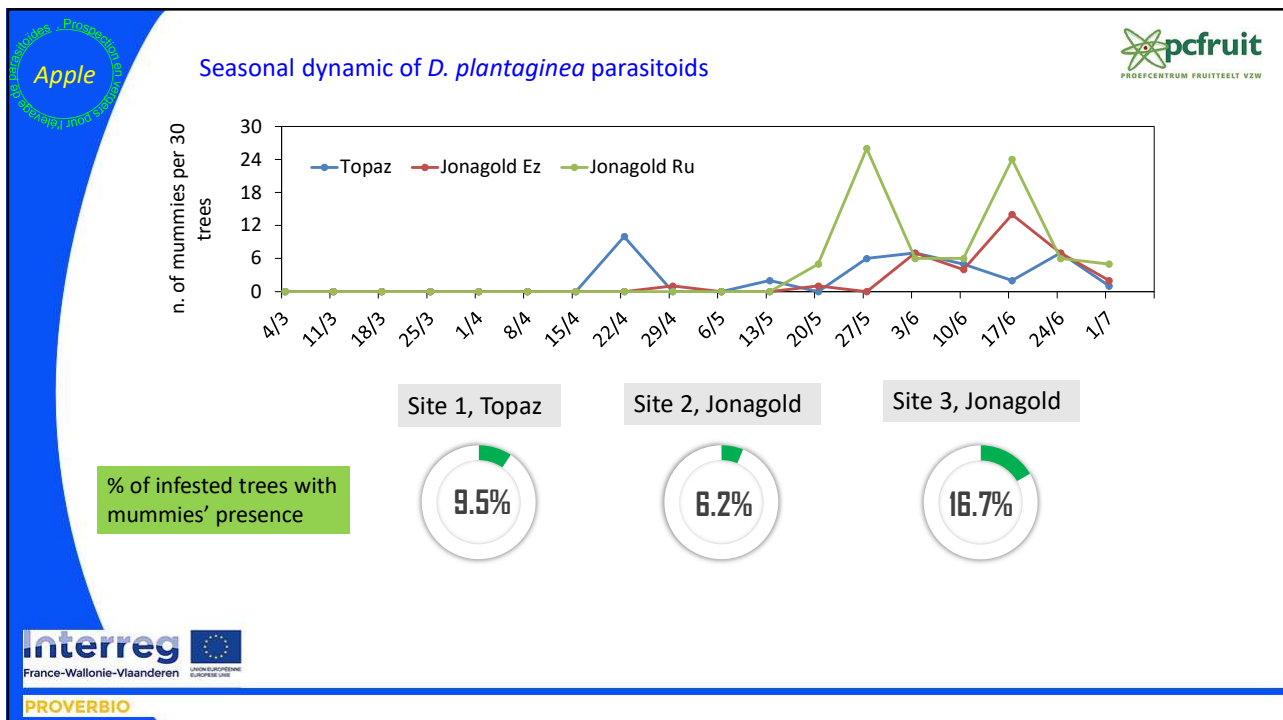
5



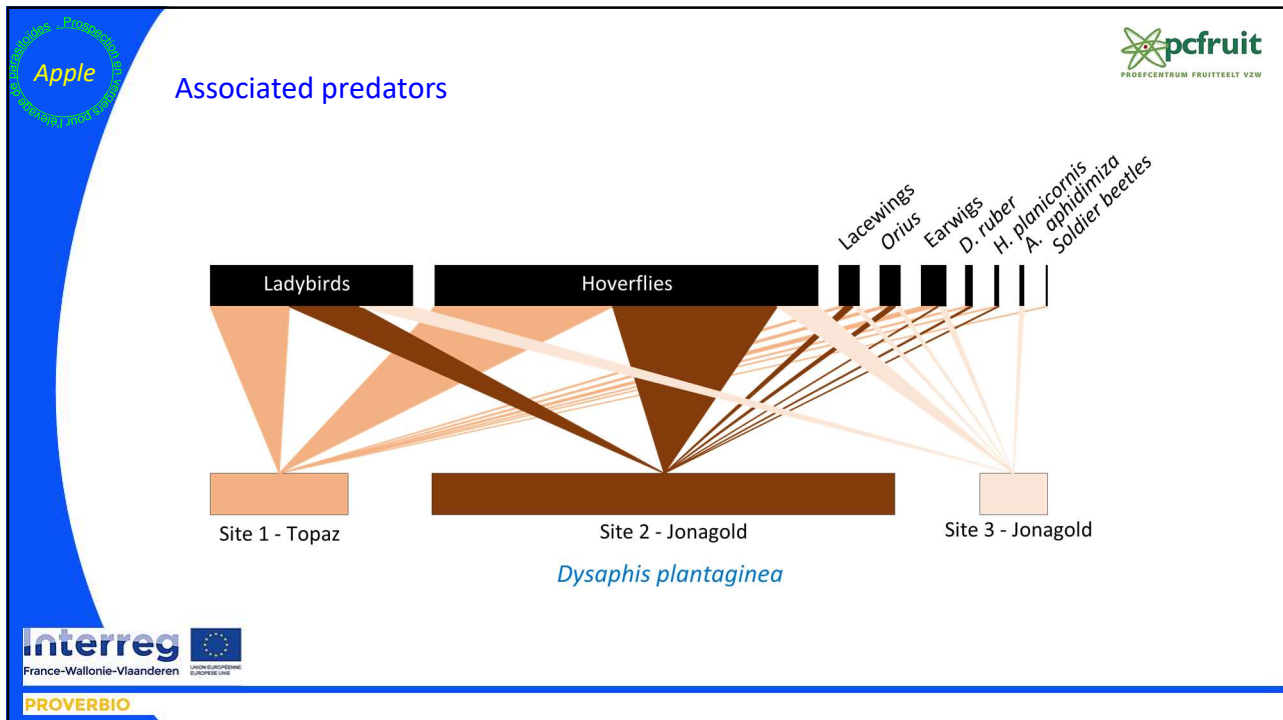
6



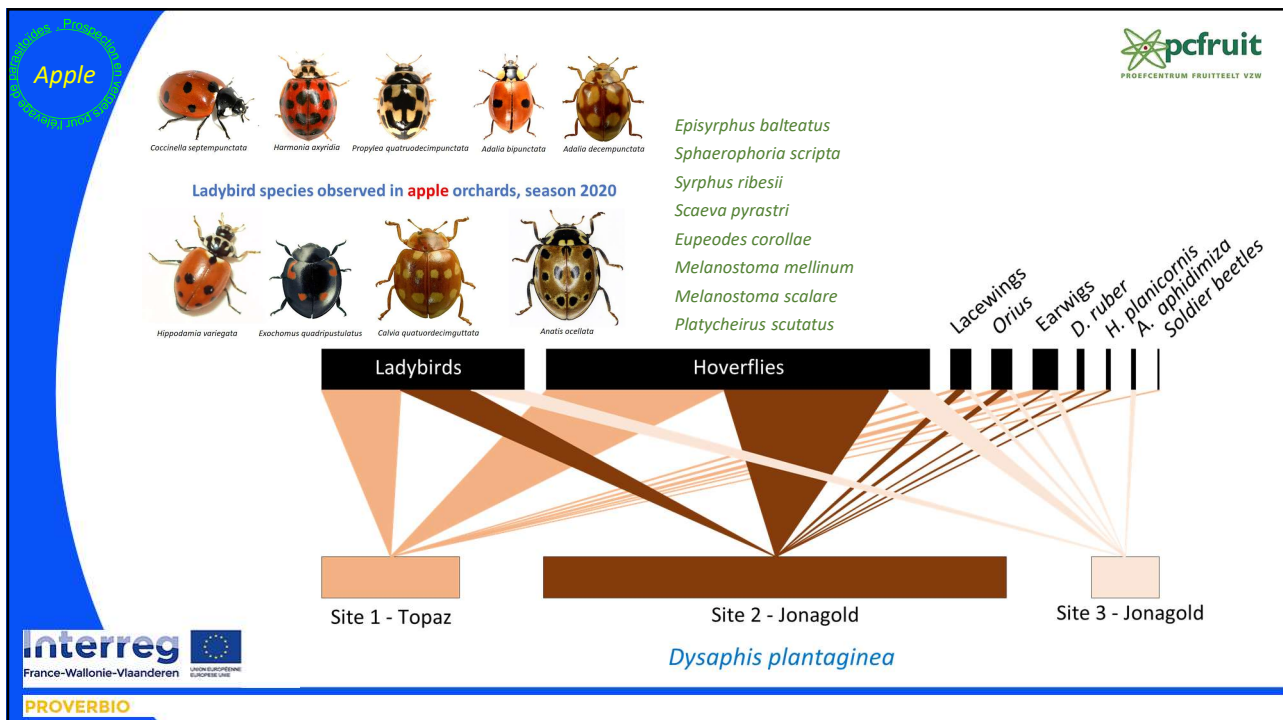
7



8



9

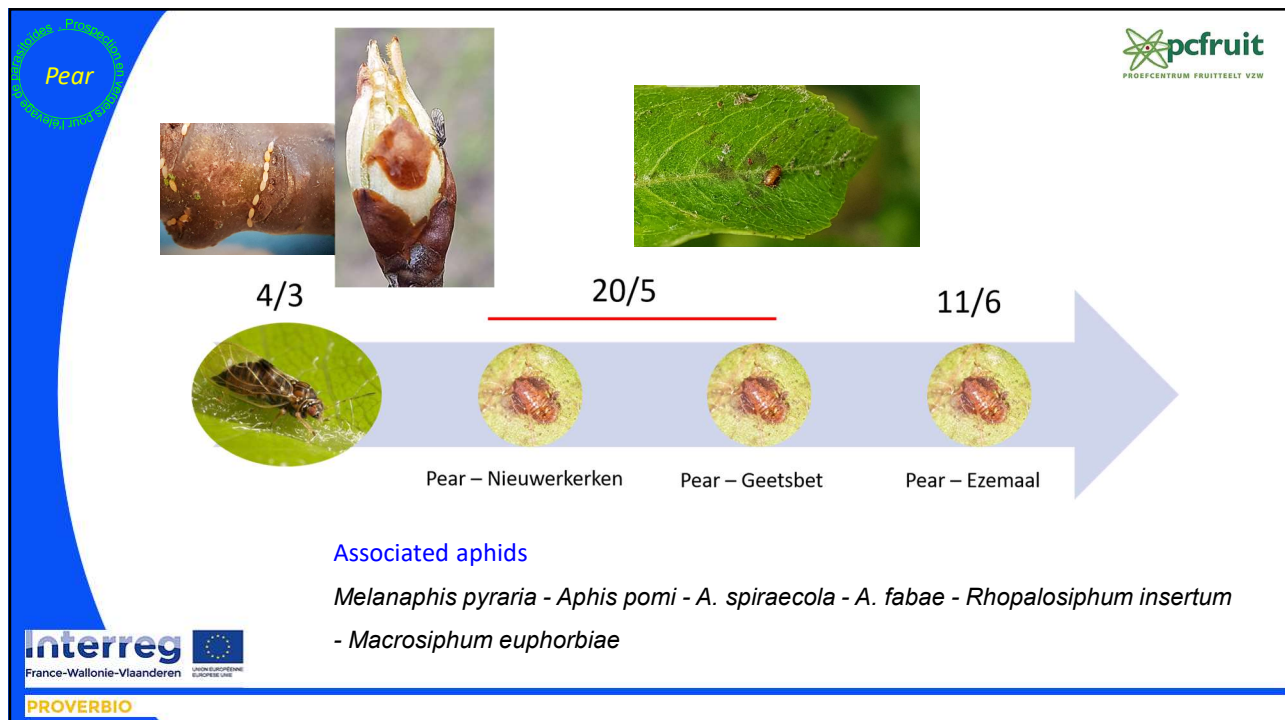


10

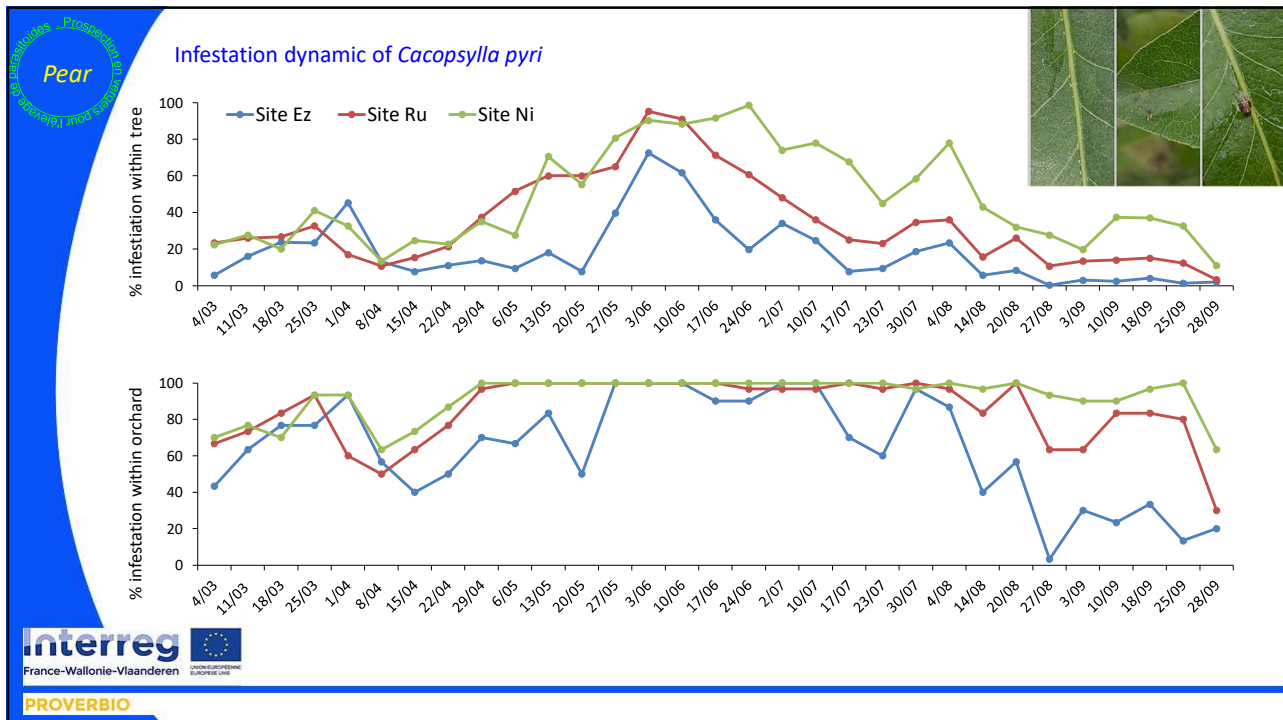
Prospection des espèces de parasitoïdes

Pear orchards

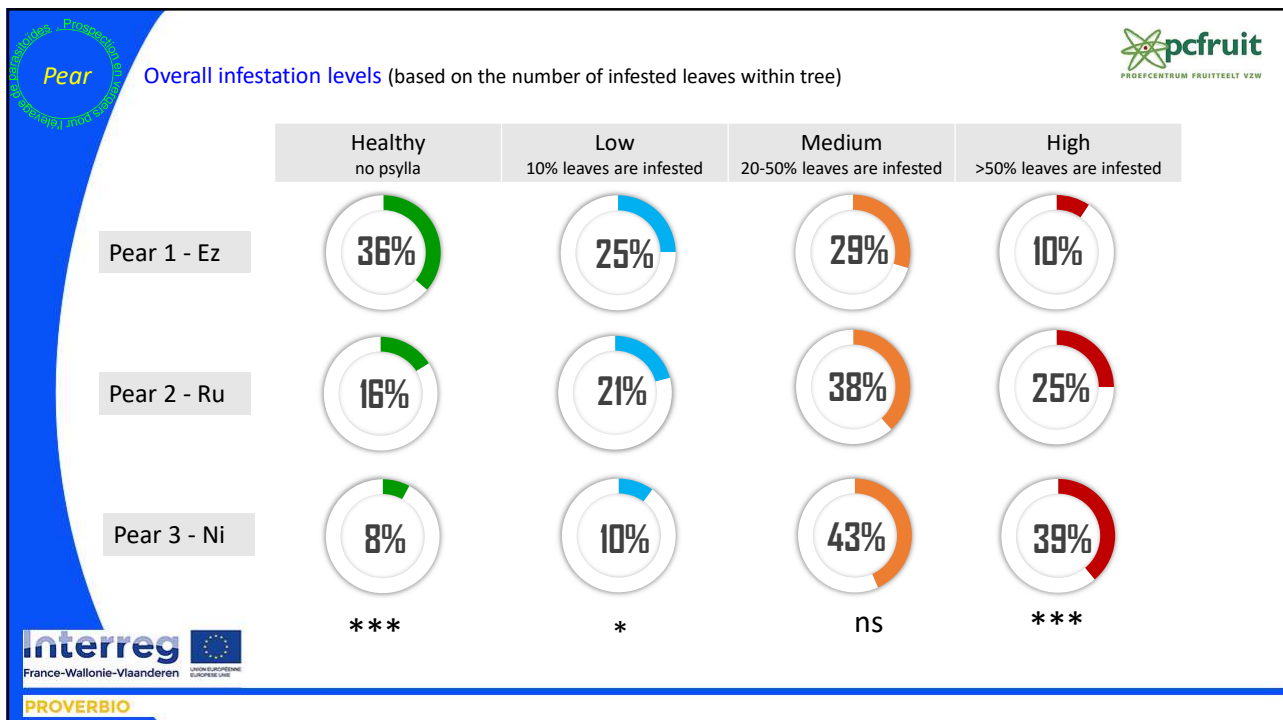
11



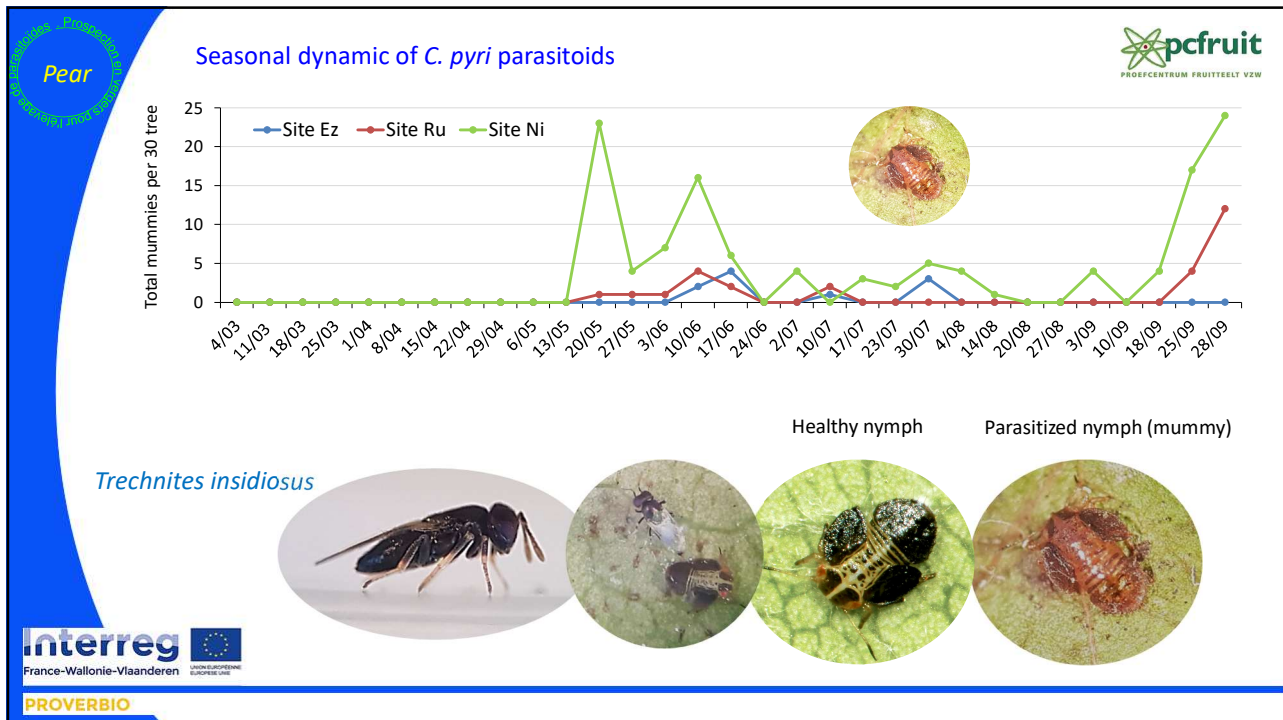
12



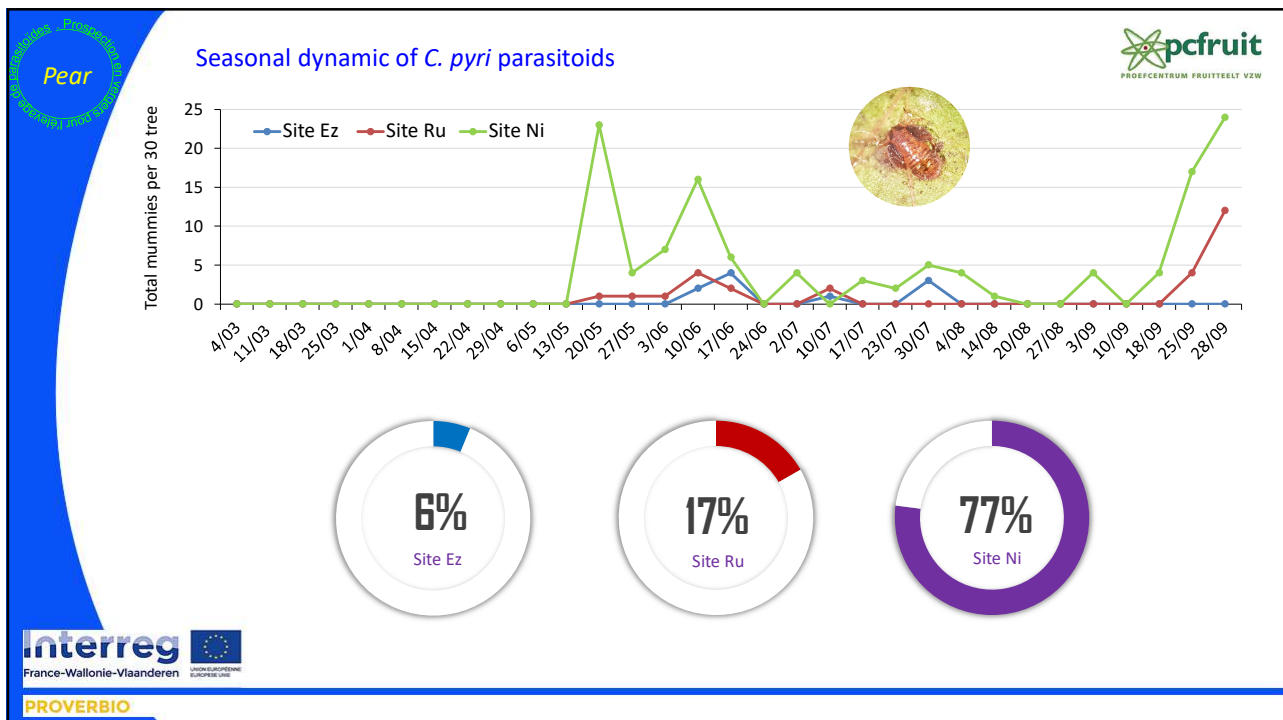
13



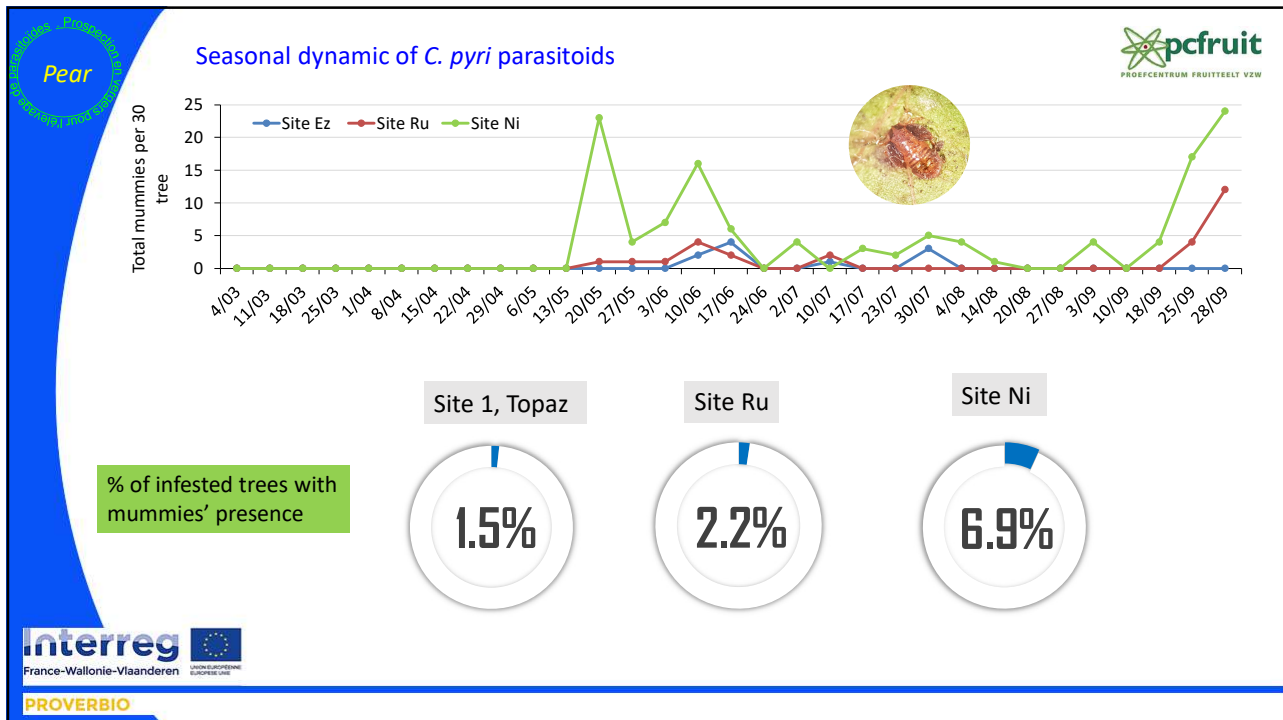
14



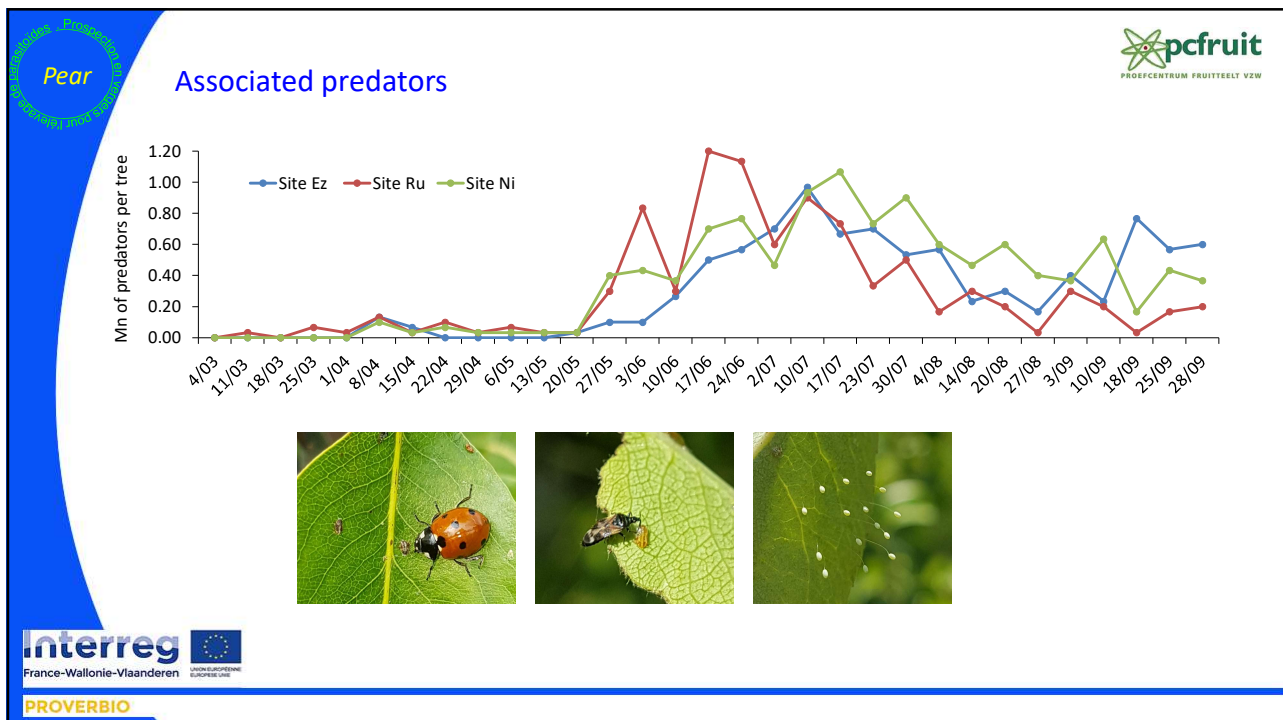
15



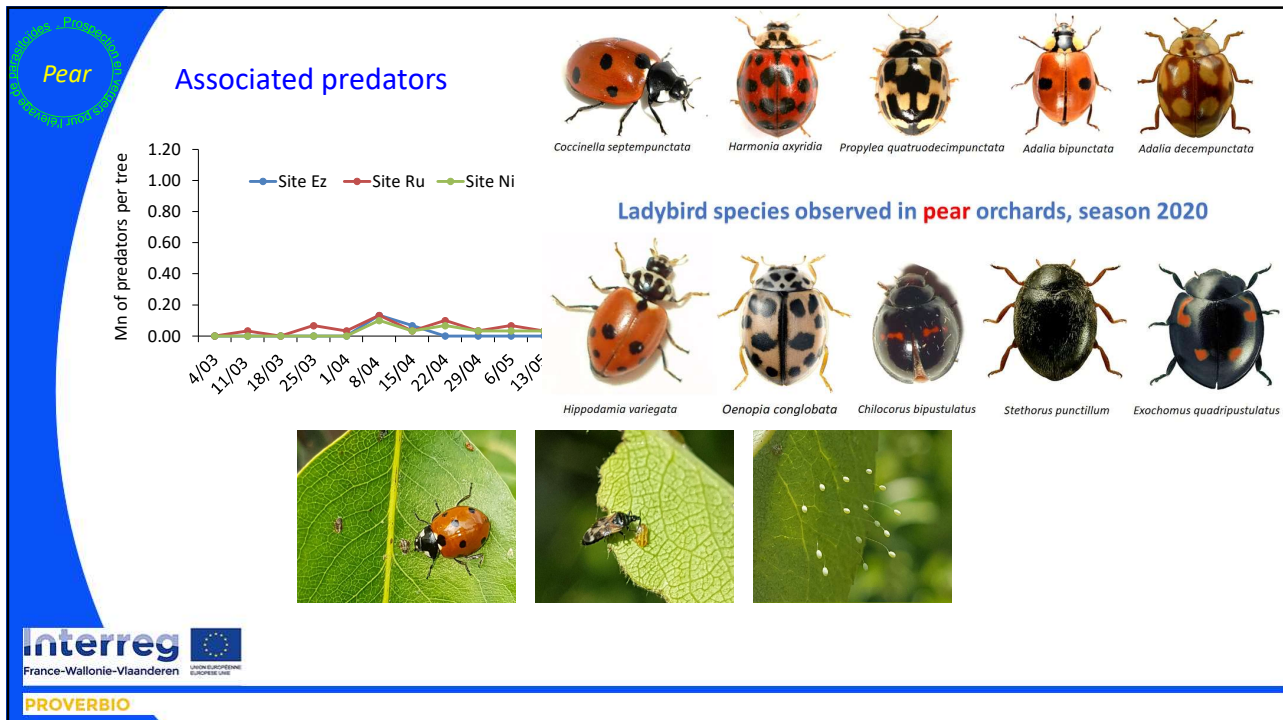
16



17



18



19

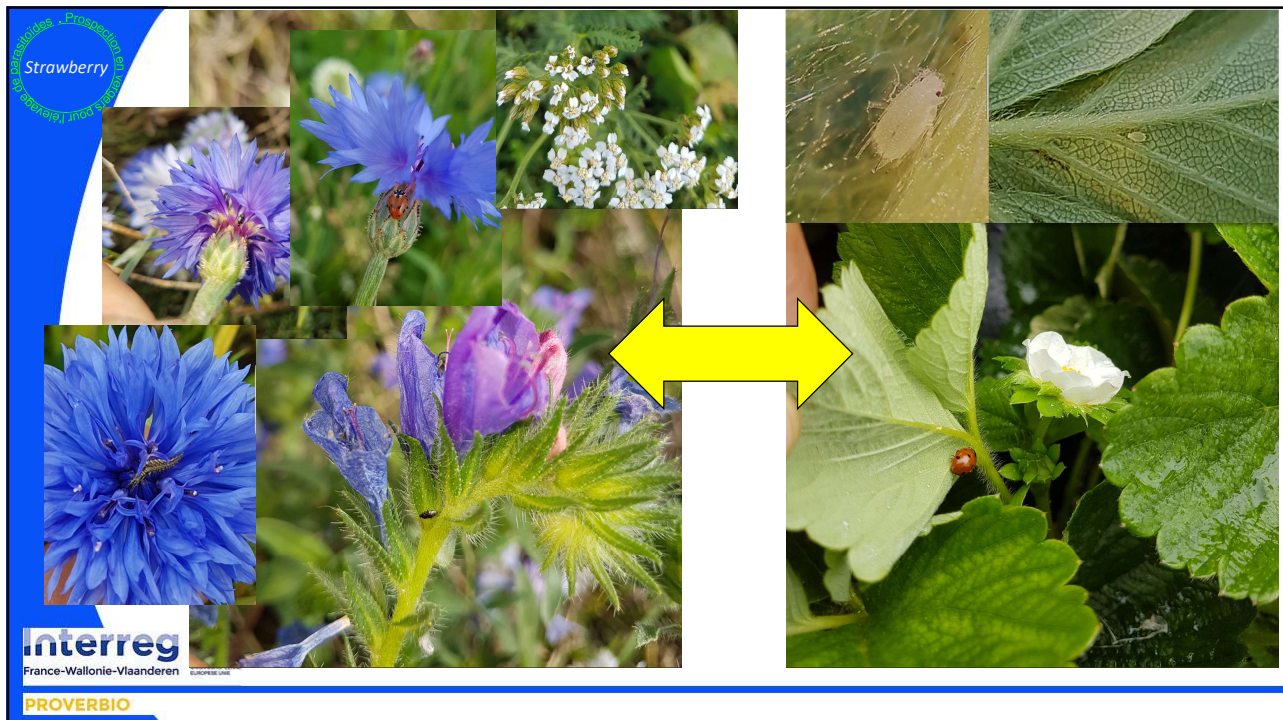
Prospection en vergers pour l'élevage de parasitoïdes

pcfruit
PROEFCENTRUM FRUITTEELT VZW

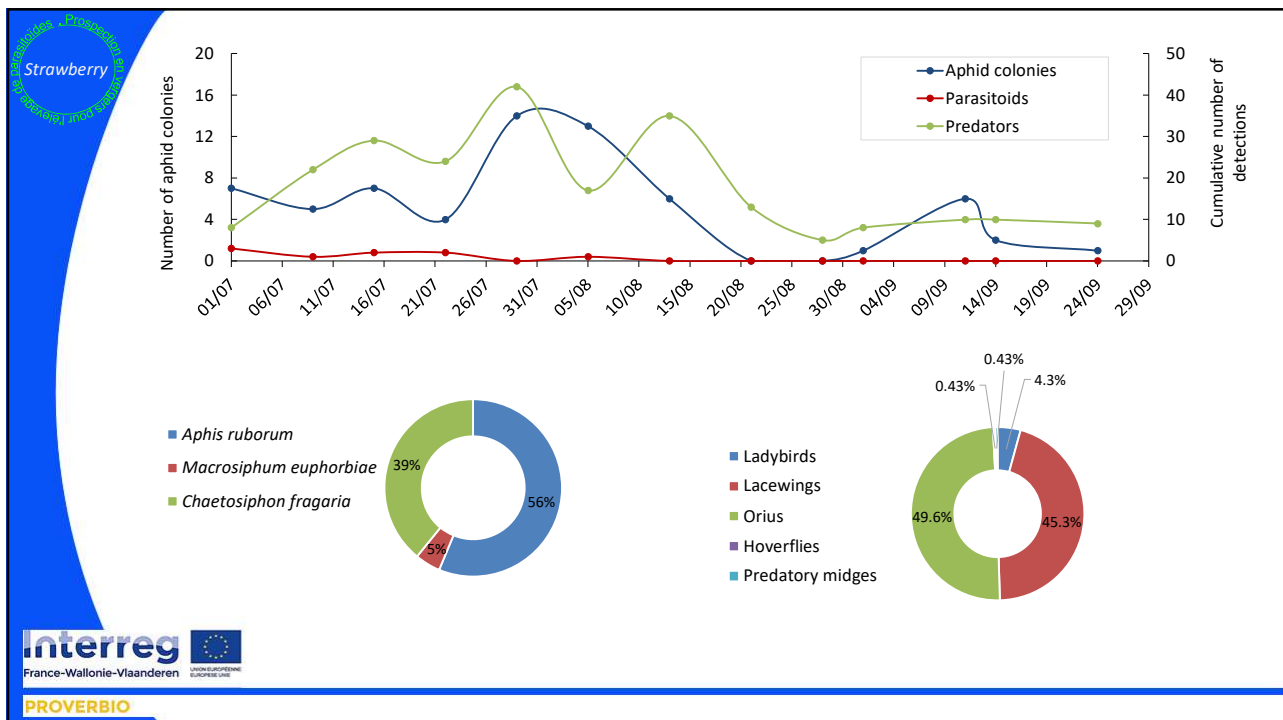
Strawberry field

Interreg
 France-Wallonie-Vlaanderen
 PROVERBIO

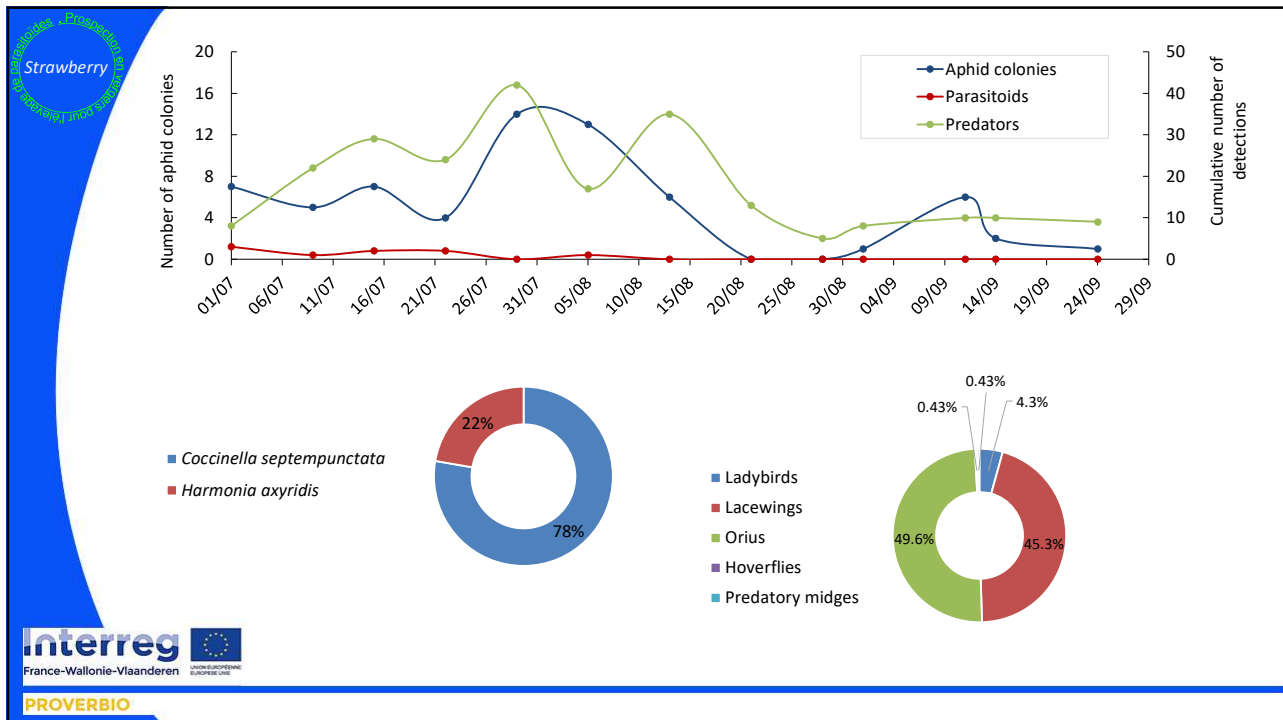
20



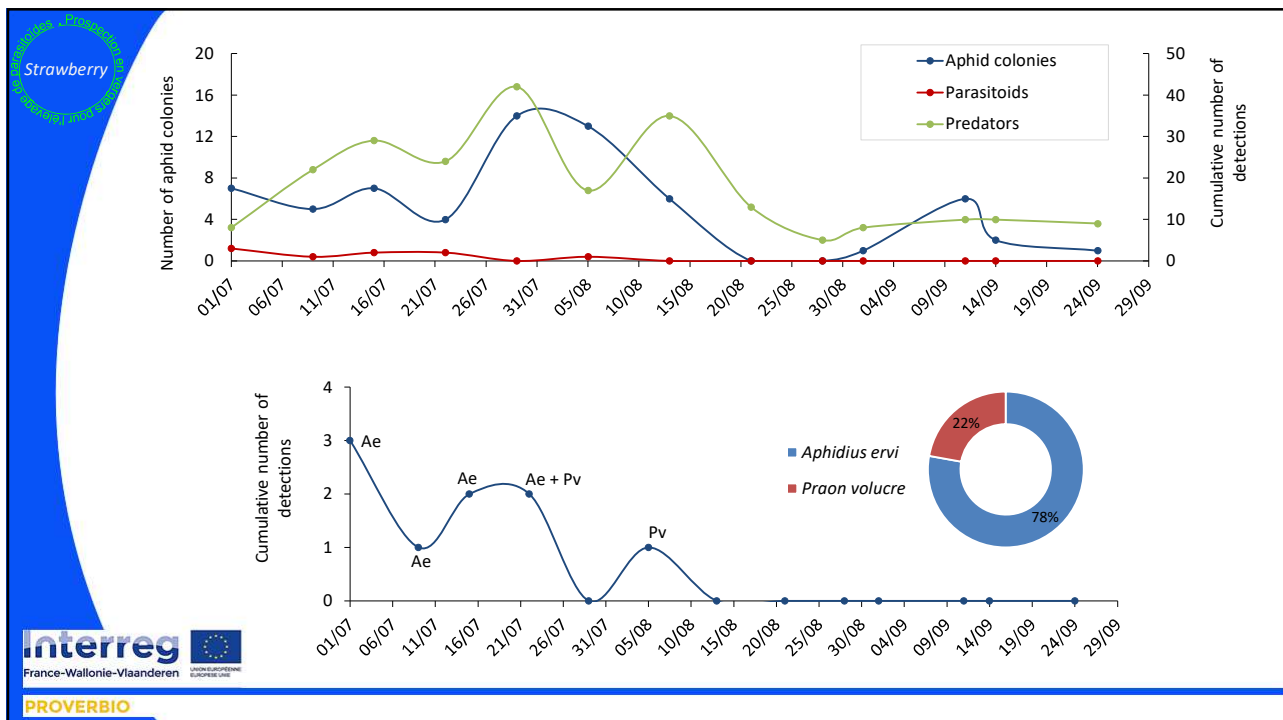
21



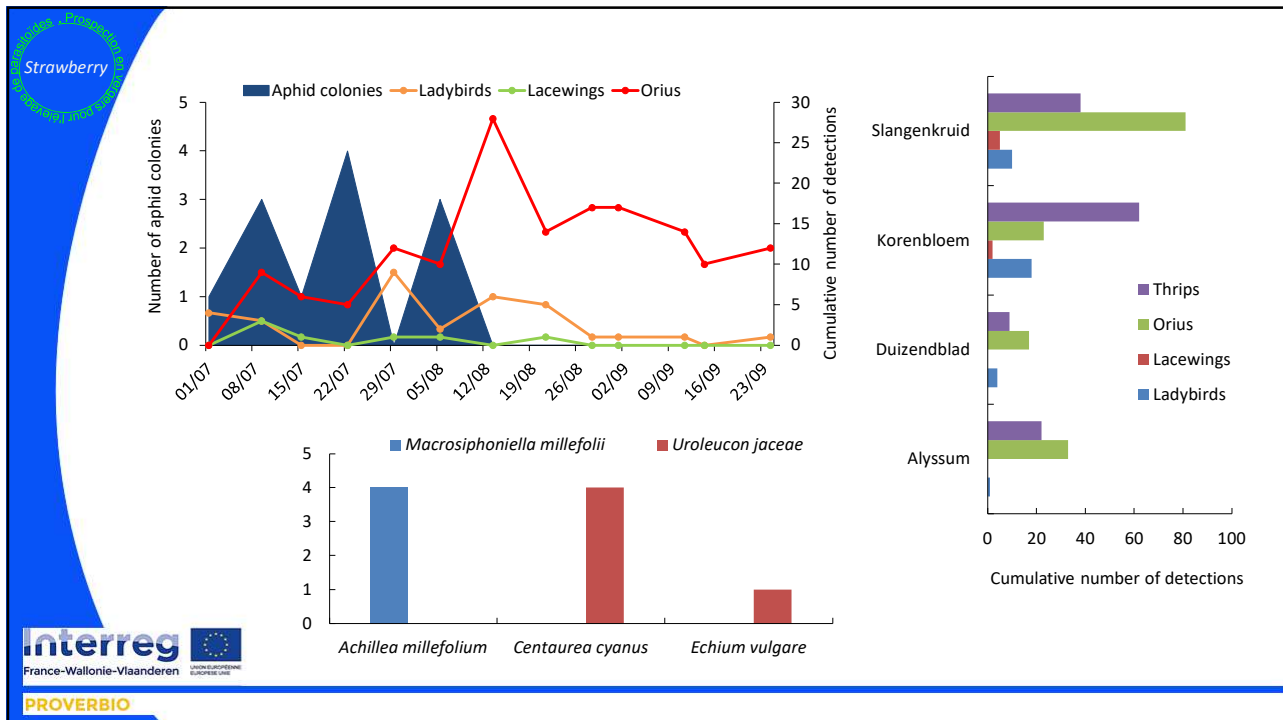
22



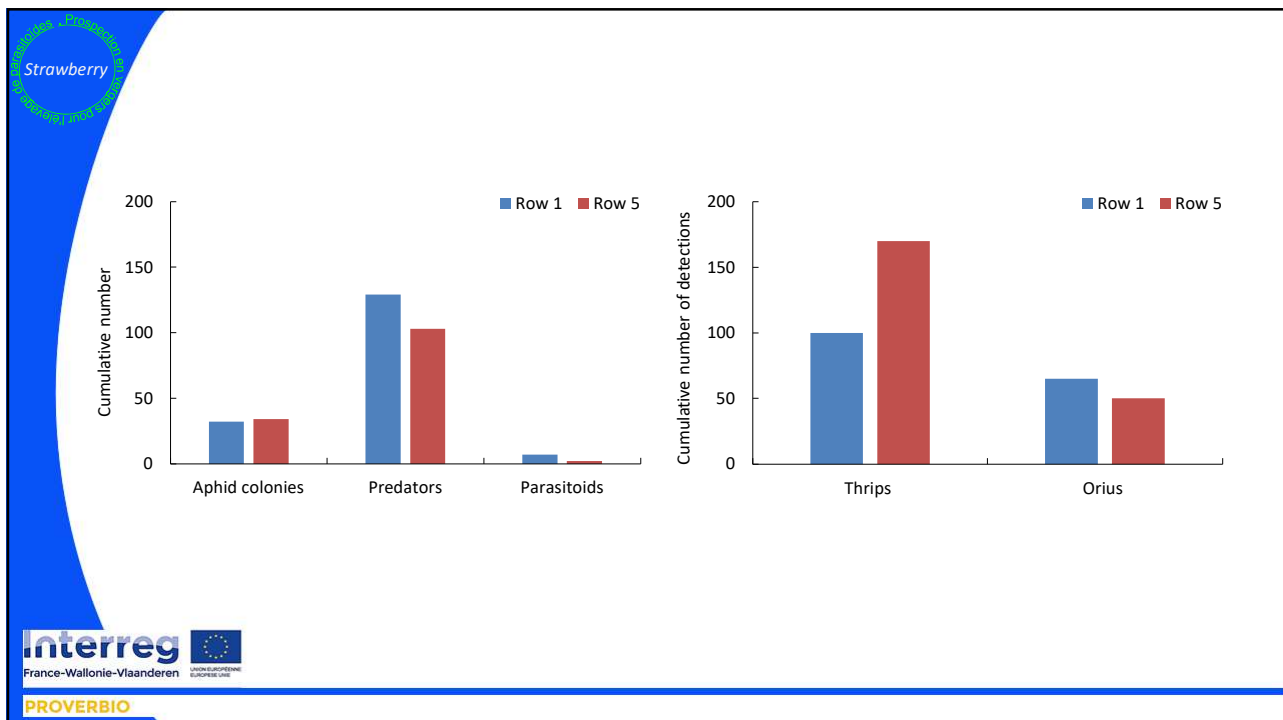
23



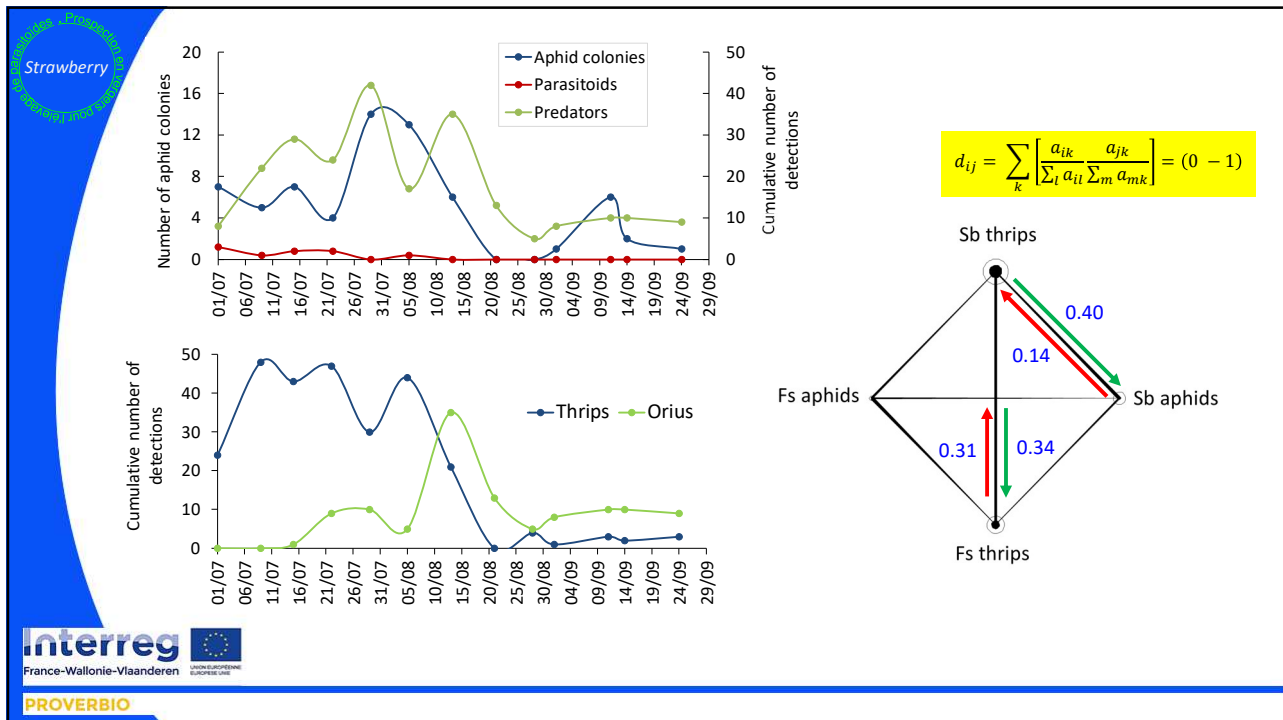
24



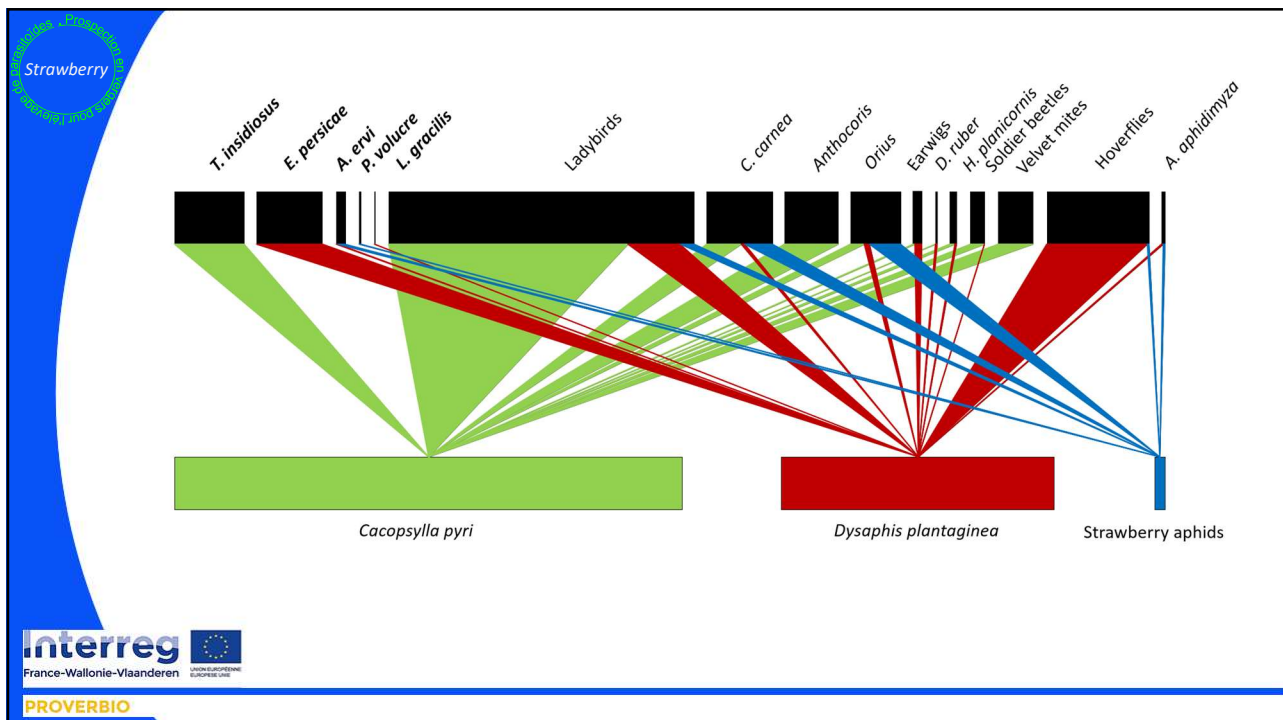
25



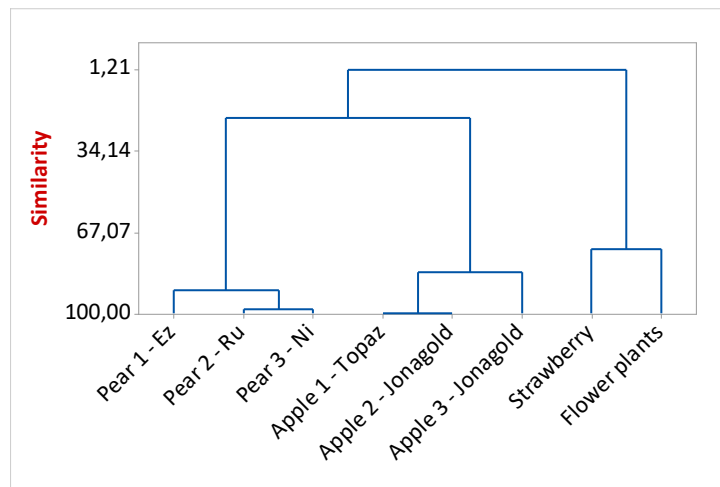
26



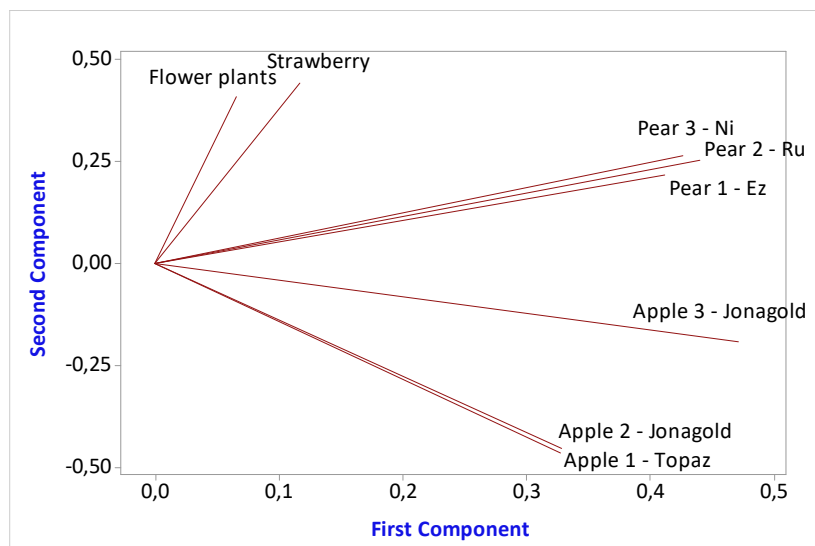
27



28



29



30

Merci - Bedankt